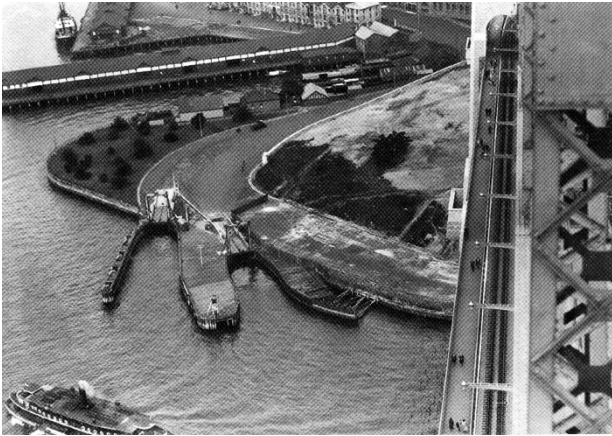


Nomination of
Dawes Point and Blues Point Vehicular Ferry Ramps
as Items of Engineering Heritage Interest

Item Name:	Dawes Point and Blues Point Vehicular Ferry Ramps		
Other/Former Names:	NA		
Locality:	Dawes Point, The Rocks; and Blues Point, McMahons Point		
Address:	Hickson Road, Dawes Point; and Blues Point Road, McMahons Point		
Co-ordinates	Dawes Point: Lat: -33.854791144749335, Long: 151.21023449732022 and Blues Point: Lat: -33.849384961780686, Long: 151.20400372579377		
EHA Branch:	Engineering Heritage Sydney		
Current Owner:	Unknown (possibly Port Authority NSW).		
Original Owner:	Unknown – possibly North Shore Ferry Co.		
Current use:	Nil		
Former use:	Vehicular ferry ramps		
Proposed use:	Nil		
Item Condition:	Dawes Point: There were originally two ferry docks with associated ramps. Realignment of Hickson Road around southern abutment of Sydney Harbour Bridge removed one ramp and the remaining ramp was reduced in width; it is in good condition. Blues Point: Good condition		
Designer:	Unknown		
Builder:	Unknown		
Started:	Unknown	Completed:	Dawes Point 1862. Blues Point unknown.
History:	<p>Before the Sydney Harbour Bridge, direct vehicular access to the North Shore - initially for horse-drawn vehicles, was by steam-driven vehicular punts.</p> <p>‘Vehicular punts of the North Shore Ferry Co started in 1862, from Dawes to Milsons Point and later from Fort Macquarie to Milsons Pt. They ceased when the Sydney Harbour Bridge opened in 1932’¹. It is suspected that when the Fort Macquarie-Milsons Point service commenced, a new terminal was constructed at Blues for the Dawes Point run.</p> <p>At each site there were two docks which were of timber piling with a ramp at the end. At Dawes Point a wharf divided the docks, on which coal was stored for fueling the ferries. With completion of the Bridge, the piling and wharf were demolished and much later on – post 1943, Hickson Road was realigned around the Bridge’s abutment at Dawes Point, with the work including removal of the western ferry ramp and narrowing of the eastern ramp.</p> <p>At Blues Point, the piling was removed after the ferries ceased, and safety</p>		

	barriers were erected at the end of the ramps.	
Description:	<p>The Dawes Point remnant is a cobblestone-paved ferry ramp reduced in width from the original.</p> <p>The Blues Point remnant is a paved ferry ramp with a concrete apron dividing the two lanes, and safety barriers at the water end.</p>	
Engineering Significance:	<p>The ramps are historically significant as evidence of the vehicular ferry/punt from Sydney city to the North Shore prior to construction of the Sydney Harbour Bridge. They are socially significant in demonstrating the means by which the North Shore was accessed from the city and developed, prior to construction of the Sydney Harbour Bridge.</p>	
Webpage Summary:	<p>Before the Sydney Harbour Bridge, direct vehicular access to the North Shore - initially for horse-drawn vehicles, was by steam-driven vehicular punts.</p> <p>‘Vehicular punts of the North Shore Ferry Co started in 1862, from Dawes to Milsons Point and later from Fort Macquarie to Milsons Pt. They ceased when the Sydney Harbour Bridge opened in 1932’¹. It is suspected that when the Fort Macquarie-Milsons Point service commenced, a new terminal was constructed at Blues for the Dawes Point run.</p> <p>At each site there were two docks which were of timber piling with a ramp at the end. At Dawes Point a wharf divided the docks, on which coal was stored for fueling the ferries. With completion of the Bridge, the piling and wharf were demolished and much later on – post 1943, Hickson Road was realigned around the Bridge’s abutment at Dawes Point, with the work including removal of the western ferry ramp and narrowing of the eastern ramp.</p> <p>At Blues Point, the piling was removed after the ferries ceased, and safety barriers were erected at the end of the ramps.</p>	
Engineering Theme	Transport - River	
Heritage Listing: (State and/or Local Authority)	Monument Australia	
References/Sources:	1. https://ozrevenues.com/tickets/13nsw.pdf	
Nominated by:	Michael Clarke	
Contact Ph & email:	0431 887 001	nardiclarke@gmail.com



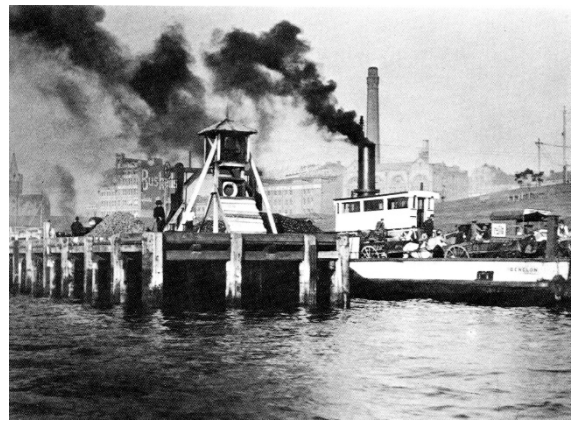
Original Dawes Point vehicular ferry terminal.
Unknown



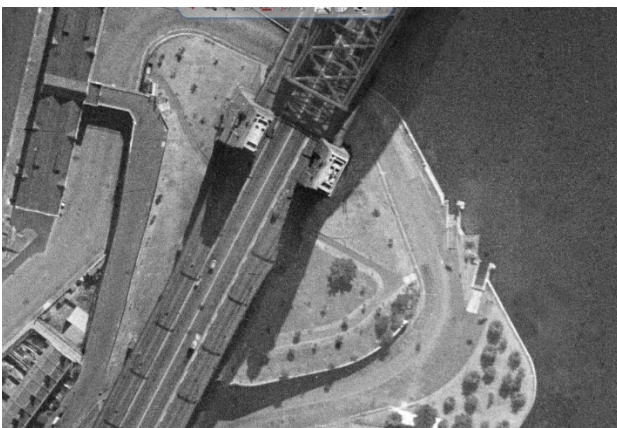
Remains of Dawes Point vehicular ferry ramps. *Michael Clarke*



Remains of Dawes Point vehicular ferry ramp, 2023. *Michael Clarke*



Vehicular ferry terminal Dawes Point.
Harold Cazneaux



Dawes Point ferry ramp c.1943. *SIX Maps*



Blues Point vehicular ferry dock in 1943 after the opening of the Sydney Harbour



Remnant of Blues Point vehicular ferry dock